

**Fibulin 5 Antibody**  
**Rabbit mAb**  
**Catalog # AP91350****Specification**

---

**Fibulin 5 Antibody - Product Information**

Application	WB
Primary Accession	<a href="#">Q9UBX5</a>
Clonality	Monoclonal
<b>Other Names</b>	
Fibulin-5; FIBL-5; Fibulin 5; FIBL 5; Fibulin5; FIBL5; Dance; Urine p50 protein; UP50; DANCE;	
Isotype	Rabbit IgG
Host	Rabbit
Calculated MW	50180 Da

**Fibulin 5 Antibody - Additional Information**

Dilution	WB~~1:1000
Purification	Affinity-chromatography
Immunogen	A synthesized peptide derived from human Fibulin 5
Description	Promotes adhesion of endothelial cells through interaction of integrins and the RGD motif. Could be a vascular ligand for integrin receptors and may play a role in vascular development and remodeling.
Storage Condition and Buffer	Rabbit IgG in phosphate buffered saline , pH 7.4, 150mM NaCl, 0.02% sodium azide and 50% glycerol. Store at +4°C short term. Store at -20°C long term. Avoid freeze / thaw cycle.

**Fibulin 5 Antibody - Protein Information****Name** FBLN5**Synonyms** DANCE**Function**

Essential for elastic fiber formation, is involved in the assembly of continuous elastin (ELN) polymer and promotes the interaction of microfibrils and ELN (PubMed:<a href="http://www.uniprot.org/citations/18185537" target="\_blank">18185537</a>). Stabilizes and organizes elastic fibers in the skin, lung and vasculature (By similarity). Promotes adhesion of endothelial cells through interaction of integrins and the RGD motif. Vascular ligand for integrin receptors which may play a role in vascular development and remodeling (PubMed:<a href="http://www.uniprot.org/citations/10428823" target="\_blank">10428823</a>). May act as an adapter that mediates the interaction between FBN1 and ELN (PubMed:<a href="http://www.uniprot.org/citations/17255108" target="\_blank">17255108</a>).

**Cellular Location**

Secreted. Secreted, extracellular space, extracellular matrix. Note=co-localizes with ELN in elastic fibers.

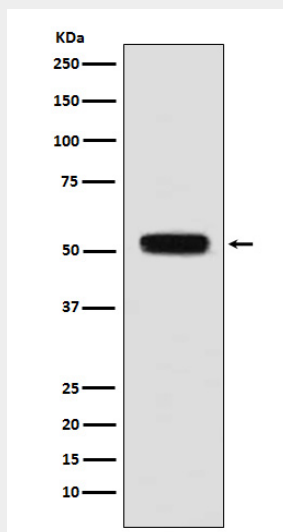
**Tissue Location**

Expressed in skin fibroblasts (at protein level) (PubMed:17035250). Expressed predominantly in heart, ovary, and colon but also in kidney, pancreas, testis, lung and placenta. Not detectable in brain, liver, thymus, prostate, or peripheral blood leukocytes (PubMed:10428823).

**Fibulin 5 Antibody - Protocols**

Provided below are standard protocols that you may find useful for product applications.

- [Western Blot](#)
- [Blocking Peptides](#)
- [Dot Blot](#)
- [Immunohistochemistry](#)
- [Immunofluorescence](#)
- [Immunoprecipitation](#)
- [Flow Cytometry](#)
- [Cell Culture](#)

**Fibulin 5 Antibody - Images**

Western blot analysis of Fibulin 5 expression in mouse heart lysate.